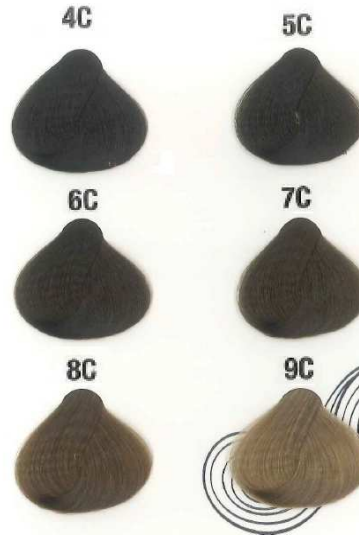


Cool

Intense ash coloration



Formulated to:

- Cool _ Lumière bases & other Lumière color.
- Light up _ Natural hair without reddish or orange shades.
- Correct _ Reddish & orange shades result of color fade.

PROPORTIONS			
Hair without grey hair	Hair with grey hair		
Apply Lumière Cool base 100% or mixed with the desired shade (Under professional criteria) Recommended Peroxide: 20 VOL	% of grey hair	Base	Cool
	Up to 30%	15 g +	45 g
	30% - 50%	30 g +	30 g
	50% - 70%	45 g +	15 g
	70% - 100%	55 g +	5 g
	Recommended Peroxide: 30 VOL * The amount of Lumière Cool will depending on the desired cold intensity & hair porosity.		

DO NOT USE

- As a toner on blond hair, bleached or super-lightening up to height 8. (Use Blue Milk, smoke corrector or silver mix instead)
- In extremely porous hair.